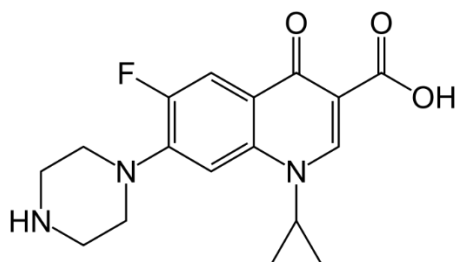


TY_Sem_VI_End Semester Exam_ATKT_CBCS

Question Bank

- The interaction of a drug with the macromolecular target involves a process known as
 - Attachment
 - Interaction
 - Binding
 - Intercalation
- Penicillin is resistant to
 - Gram positive bacteria
 - Gram negative bacteria
- How many conformations are possible for peptide bond?
 - One
 - Two
 - Three
 - Four
- Which of these is resistant to β -lactamase enzymes and contains an Isoxazolyl ring
 - Oxacillin
 - Penicillin V
 - Nafcillin
 - Methicillin
- Which is the most preferred conformer in a peptide bond?
 - Cis
 - Trans
 - Levo
 - dextro
- Which of these is a 1st generation cephalosporin
 - Cefalexin
 - Cephmandole
 - Cefuroxime
 - Ceftriaxone
- Which among these is a long acting tetracycline antibiotic?
 - Oxytetracycline
 - Chlortetracycline
 - Minocycline
 - Tetracyclin
- Identify the following drug



- a. Norfloxacin
b. ciprofloxacin
c. Sparfloxacin
d. Gatifloxacin

8. Which of the agents show antifungal activity by inhibiting cytochrome P450 enzymes responsible for the demethylation of lanosterol to ergosterol?

- a. Polyenes
b. Triazoles
c. Allylamines
d. Thiocarbamate

9. One of the following is not a secondary structure of protein

- a. α -helix
b. β -pleated sheet
c. β -turn
d. γ -turn

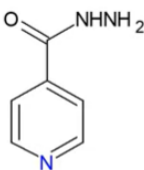
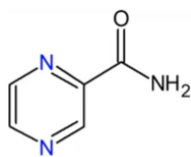
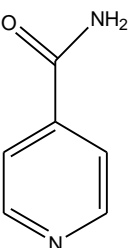
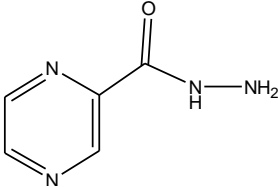
10. Which of these is a 4th generation fluoroquinolone

- a. Ciprofloxacin
b. gatifloxacin
c. lomefloxacin
d. sparfloxacin

11. Which of these is a monobactams?

- a. Aztreonam
b. lomefloxacin
c. Chlortetracycline
d. Imipenam

12. Identify the structure of pyrazinamide

- a. 
- b. 
- c. 
- d. 

13. Isoniazid acts by

- a. Inhibition of protein synthesis
- b. Inhibition of mycolic acid synthesis
- c. Inhibition of RNA synthesis
- d. Inhibition of ADP synthesis

14. ACE inhibitors are

- a. Reversible Inhibitors
- b. Irreversible Inhibitors
- c. Allosteric inhibitors
- d. Transition state inhibitors

15. The chemical name of PAS is

- a. 2-amino-4-hydroxysalicylic acid
- b. 4-amino-2-hydroxysalicylic acid
- c. 2-amino-3-hydroxysalicylic acid
- d. 4-amino-2-hydroxybenzoic acid

16. Which of these is 8-aminoquinolines used as an anti-malarial drug?

- a. primaquine
- b. chloroquine
- c. Artether
- d. sulfadoxine

17. The polypeptide chain can turn abruptly and go to the opposite direction. This phenomenon is known as:

- a. α -turn
- b. β -turn
- c. γ -turn
- d. δ -turn

18. The heterocyclic ring present in chloroquinoline

- a. Isoquinoline
- b. Pyrimidine
- c. Quinoline
- d. Quinazoline

19. When the damage to the muscle cells is found in the body, the levels of which enzyme rises?

- a. Protein kinase
- b. Creatinine kinase
- c. Cyclin dependent protein kinase
- d. Lipid kinase

20. Polyclonal antibiotics are not powerful tools for clinical diagnostic tests

- a. True
- b. Partial true
- c. False
- d. Partial false