



MAHARASHTRA EDUCATIONAL SOCIETY'S H. K. COLLEGE OF PHARMACY

PRATIKSHA NAGAR OSHIWARA, JOGESHWARI (W), MUMBAI 400102

Affiliated to Mumbai University, Approved by A.I.C.T.E., P.C. I., D.T.E. & Govt. of Maharashtra

University Code: 738 A.I.C.T.E Approval No. 06/07/MS/PHARM/2008/007 D.T.E Code No. PH3234

VISION: To Be recognized as the Institution providing quality education in Pharmacy to serve the health care sector

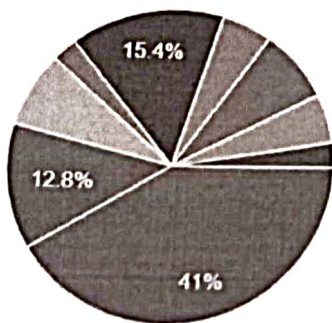
Alumni Feedback and Analysis

Academic year: 2022-23

Mode: Online

Passing year

39 responses



- 21-22
- 20-21
- 19-20
- 18-20
- 17-18
- 16-17
- 15-16
- 14-15
- 13-14
- 12-13
- 11-12
- 10-11
- 9-10

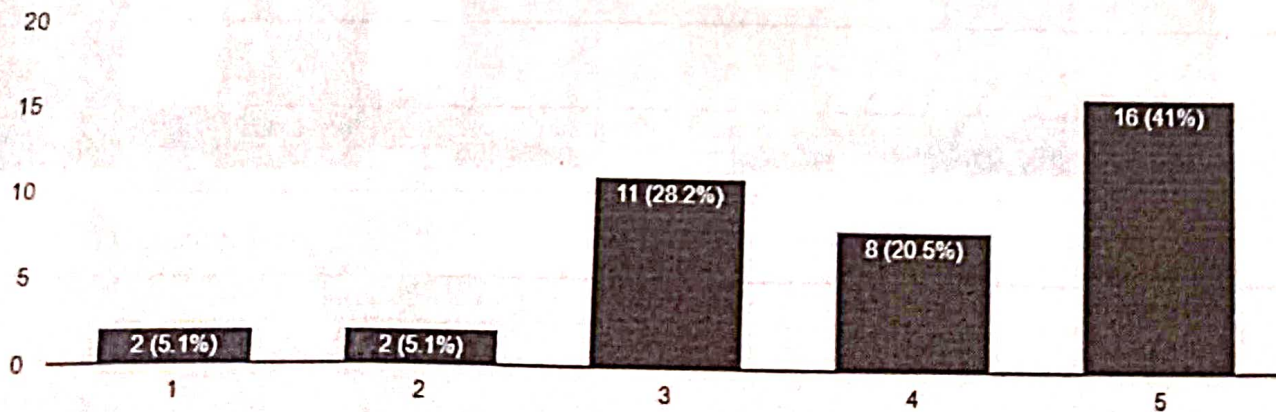
▲ 1/2 ▼

▲ 2/2 ▼

Curriculum meets the requirements for employability in multidisciplinary filed.

Copy

39 responses





MAHARASHTRA EDUCATIONAL SOCIETY'S H. K. COLLEGE OF PHARMACY

PRATIKSHA NAGAR OSHIWARA, JOGESHWARI (W), MUMBAI 400102

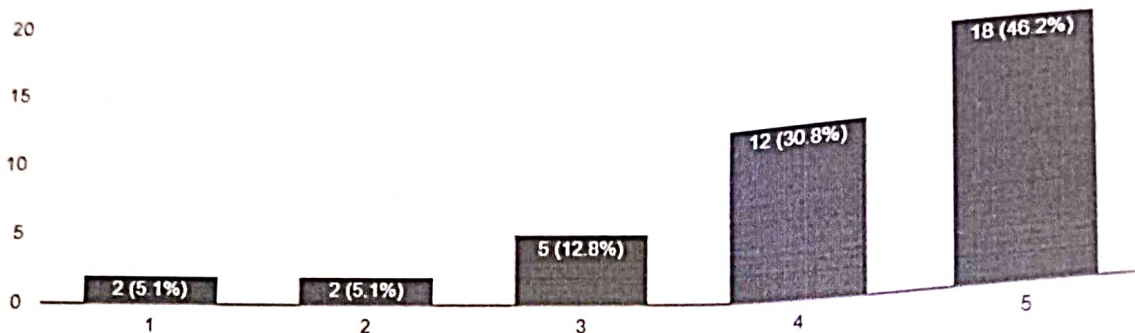
Affiliated to Mumbai University, Approved by A.I.C.T.E., P.C. I., D.T.E. & Govt. of Maharashtra
University Code: 738 A.I.C.T.E Approval No. 06/07/MS/PHARM/2008/007 D.T.E Code No. PH3234

VISION: To Be recognized as the Institution providing quality education in Pharmacy to serve the health care sector

The curricular and extra curricular activities helped the student to their industry level.

Copy

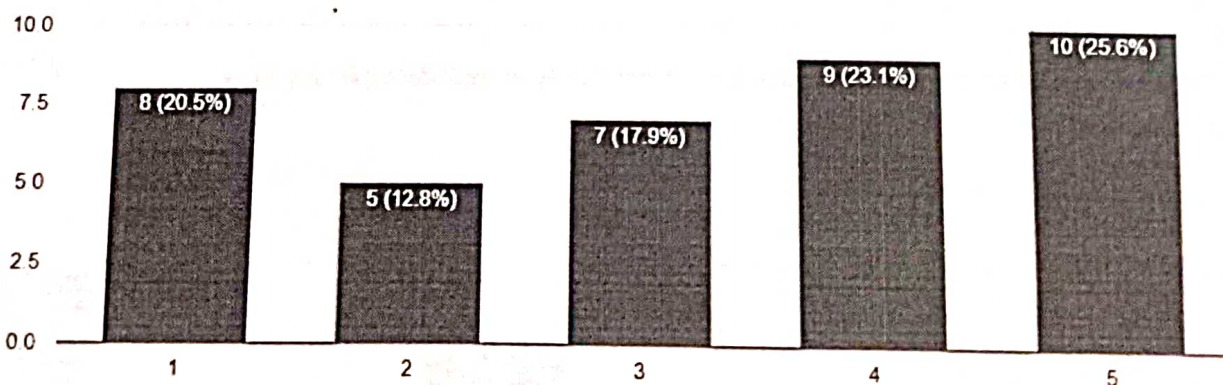
39 responses



To what extent the placement activities helped you?

Copy

39 responses





MAHARASHTRA EDUCATIONAL SOCIETY'S
H. K. COLLEGE OF PHARMACY

PRATIKSHA NAGAR OSHIWARA, JOGESHWARI (W), MUMBAI 400102

Affiliated to Mumbai University, Approved by A.I.C.T.E., P.C. I., D.T.E. & Govt. of Maharashtra

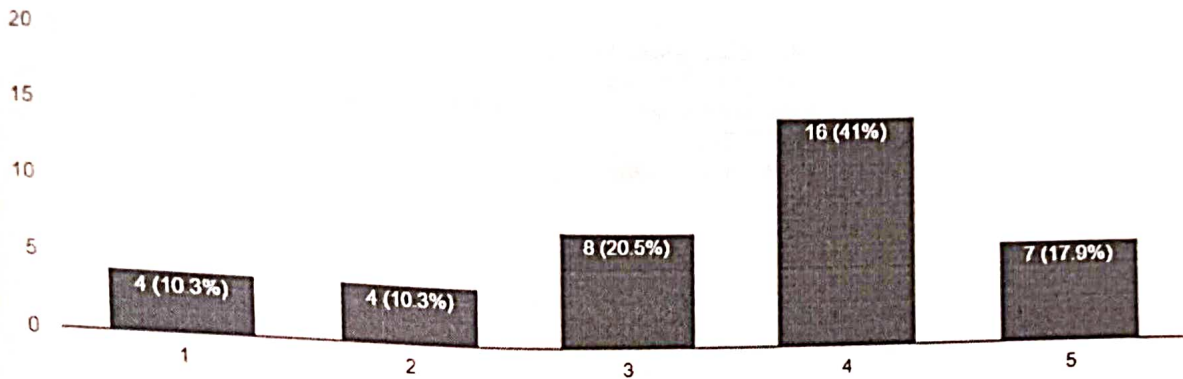
University Code: 738 A.I.C.T.E Approval No. 06/07/MS/PHARM/2008/007 D.T.E Code No. PH3234

VISION: To Be recognized as the Institution providing quality education in Pharmacy to serve the health care sector

Curriculum effective in bridging the gap between industry and academia.

39 responses

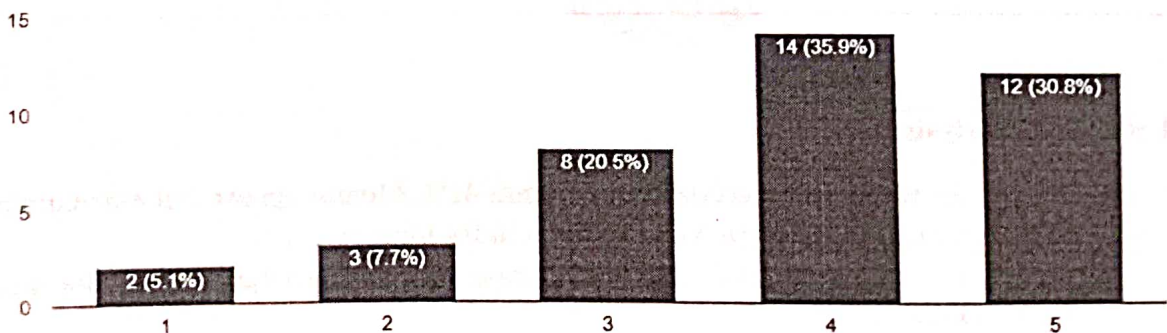
Copy



Quality of infrastructure and resources provided by institute.

39 responses

Copy





MAHARASHTRA EDUCATIONAL SOCIETY'S H. K. COLLEGE OF PHARMACY

PRATIKSHA NAGAR OSHIWARA, JOGESHWARI (W), MUMBAI 400102
Affiliated to Mumbai University. Approved by A.I.C.T.E., P.C. I., D.T.E. & Govt. of Maharashtra

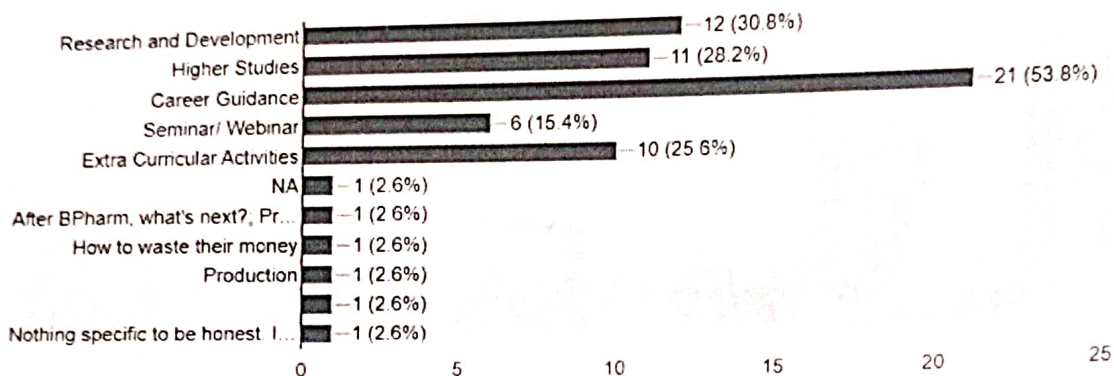
University Code: 738 A.I.C.T.E Approval No. 06/07/MS/PHARM/2008/007 D.T.E Code No. PH3234

VISION: To Be recognized as the Institution providing quality education in Pharmacy to serve the health care sector

Copy

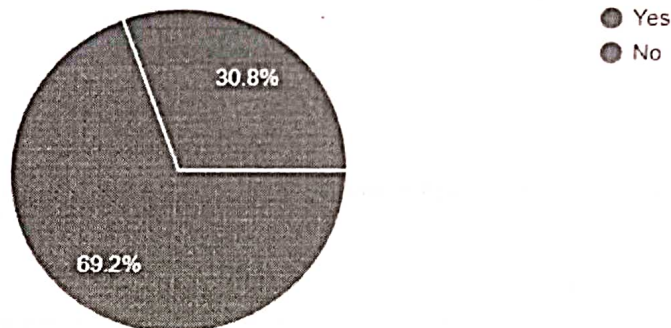
On which area would you like to interact with the students of HKCP

39 responses



Are you still connected with HKCP?

39 responses



Feedback Analysis:

- As per the responses received from alumni 41% Alumni agrees that curriculum meets the requirements for employability in multidisciplinary filed.
- 46.2% alumni agree curricular and extra-curricular activities helped the student to their industry level.
- 26.10% Alumni agrees that placement activities helped them for placement.
- 17.9% Students agrees that curriculum is effective in bridging the gap between industry and academia.
- 30.8% Students agree that quality of infrastructure and resources provided by institute.



MAHARASHTRA EDUCATIONAL SOCIETY'S

H. K. COLLEGE OF PHARMACY

PRATIKSHA NAGAR OSHIWARA, JOGESHIWARI (W), MUMBAI 400102

Affiliated to Mumbai University, Approved by A.I.C.T.E., P.C. I., D.T.E. & Govt. of Maharashtra

University Code: 73B A.I.C.T.E Approval No. 06/07/MS/PHARM/2008/007 D.T.E Code No. PH3234

VISION: To Be recognized as the Institution providing quality education in Pharmacy to serve the health care sector

- 53.8% alumni are interested to interact with the students of HKCP with respect to career guidance, 30.8% of the students willing to interact with the students on research and development, 28.2% of the alumni willing to guide students on higher studies. 25.6% alumni wish to guide the students on extracurricular activities, 15.4% alumni wish to talk with the students on seminars and webinars.
- 69.2 % students are still connected to HKCP.

Report Prepared by

Mr. Prathmesh Kothawade

Mrs. Samreen Khan



Principal
Dr. M. N. Saraf